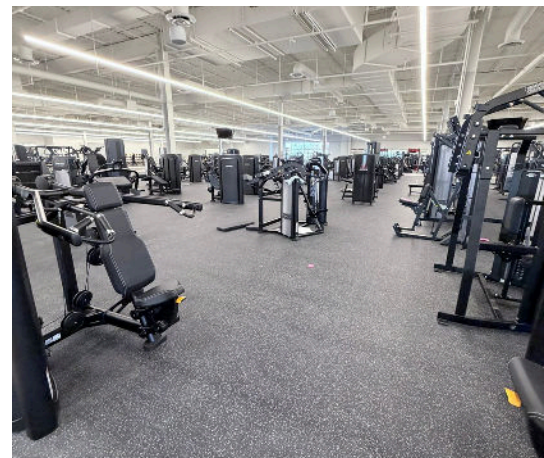
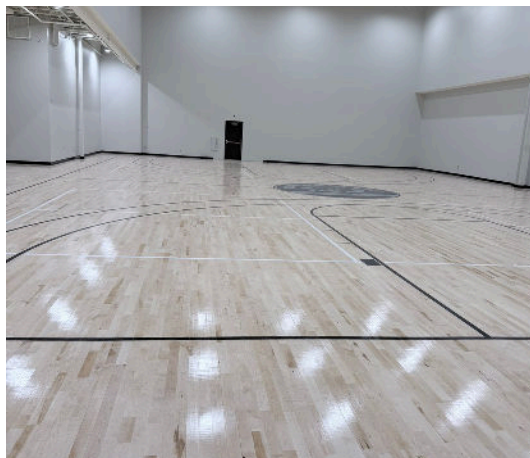
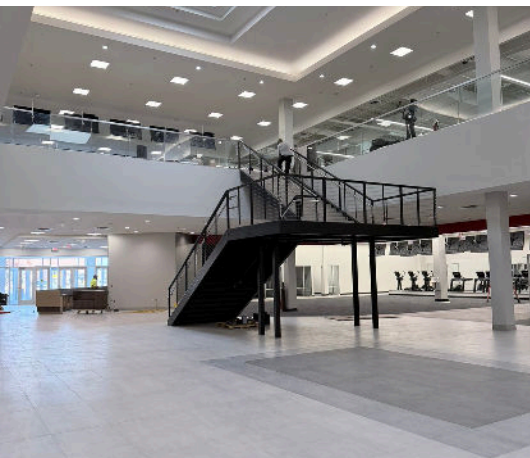


POWERHOUSE GYM



Ronnisch Construction is transforming a former anchor retail space at The Mall at Partridge Creek into what will become the largest Powerhouse Gym in the nation. Our team is managing the full demolition of the previous tenant space, extensive structural modifications, and the build-out of a high-end fitness environment that includes a swimming pool, basketball court, track, turf areas, sauna and wellness features. We are coordinating specialty vendors, advanced MEP systems, and premium finishes to bring this state-of-the-art facility to life. When complete, the space will serve as a major community destination for fitness, recovery, and social engagement — and a standout example of Ronnisch's ability to reimagine large-scale commercial spaces.



Location

Clinton Twp, Michigan



Square Footage

112,434



Architect

Serenity Architecture



Ronnisch Service

Construction Management