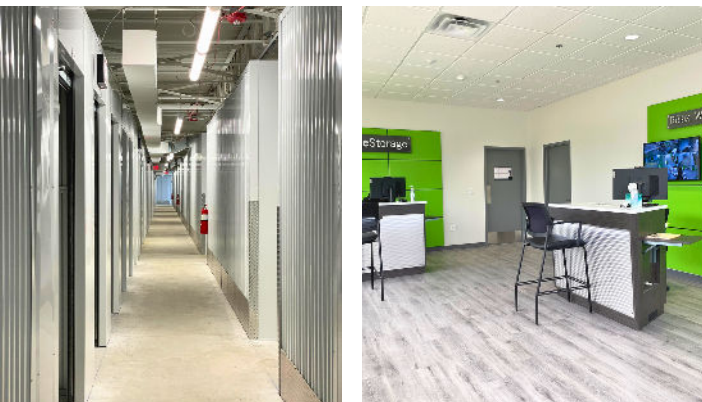




WANDA STORAGE

Jarbou Ronnisch Construction completed the Wanda Storage project in Ferndale, MI, which involved demolishing an existing building to develop a modern storage facility. The project included an 87,544-square-foot, two-story indoor storage conversion with climate-controlled units and a 3,700-square-foot, single-story drive-up storage building for convenient exterior access. Extensive site work was performed, including excavation, grading, stormwater management, pavement and access road construction, and utility upgrades to support the facility's operations. Through strategic planning and expert execution, Jarbou Ronnisch delivered a high-quality, functional, and secure storage solution that enhances the local community.



- 📍 FERNDALE, MI
- 🏢 91,200 SQUARE FEET
- 🏗️ DESIGNHAUS ARCHITECTURE
- 🏠 JRC CONSTRUCTION MANAGEMENT